

PARTS LIST

Model: XG500DM—E



MARUYAMA MFG. CO., INC.

**4-15, Uchikanda, 3-Chome,
Chiyoda-ku, Tokyo 101-0047**

Japan

PHONE +81-3-3252-2285

FAX +81-3-3252-2253

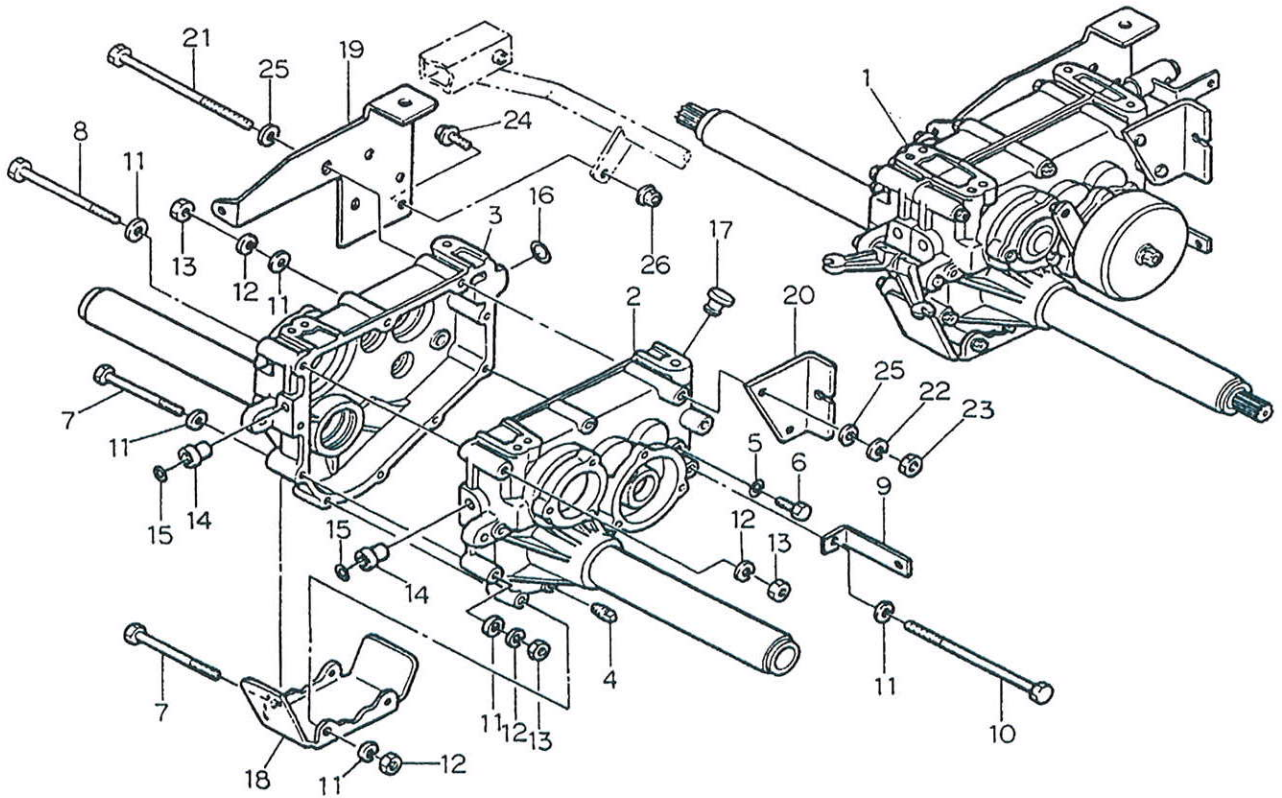
<http://www.maruyama.co.jp>

I N D E X

(Model XG500DM—E)

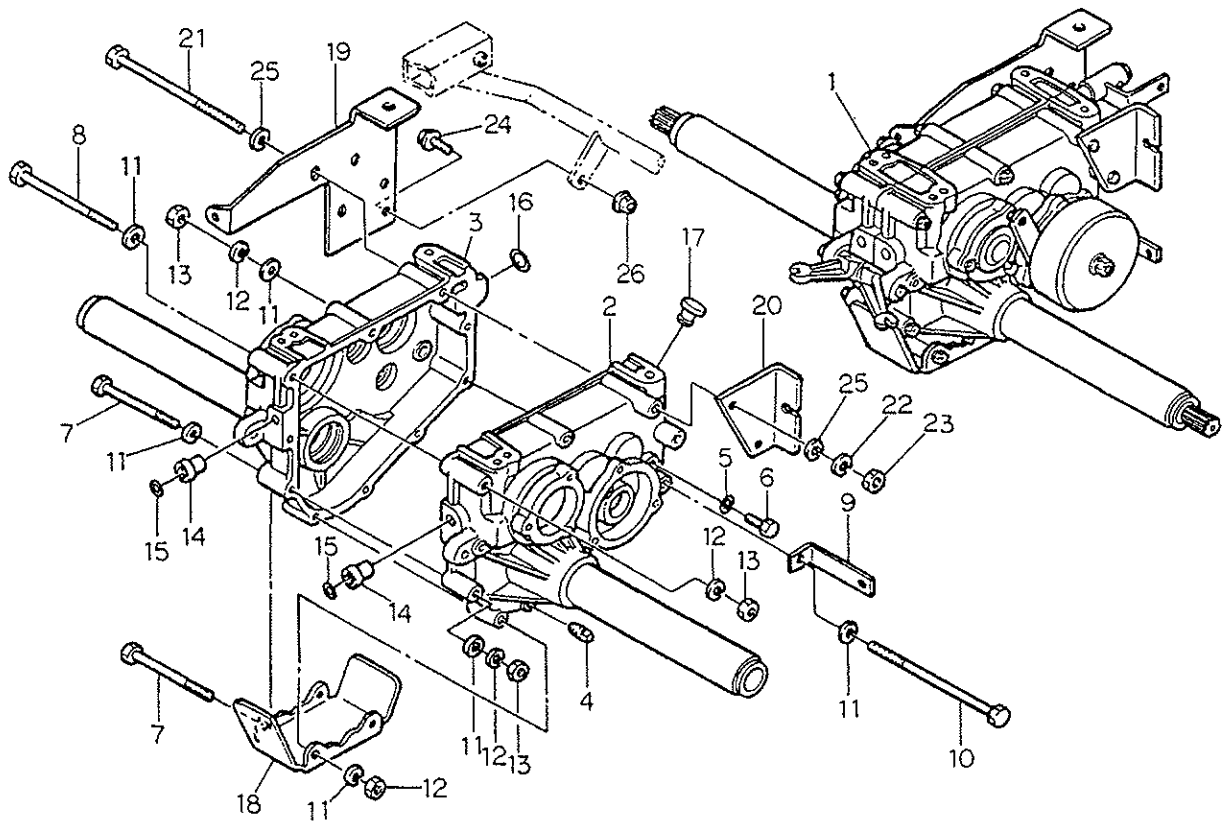
Transmission (No. 1)	Page 1
Transmission (No. 1)	Page 2
Transmission (No. 2)	Page 3
Transmission (No. 3)	Page 4
Transmission (No. 4)	Page 5
Transmission (No. 5)	Page 6
Frame (No. 1)	Page 7
Frame (No. 2)	Page 8
Frame (No. 3)	Page 9
Frame (No. 4)	Page 10
Frame (No. 5)	Page 11
Frame (No. 6)	Page 12
Roller, Crawler (No. 1)	Page 13
Roller, Crawler (No. 2)	Page 14
Engine/Driving (No. 1)	Page 15
Engine/Driving (No. 2)	Page 16
Engine/Driving (No. 3)	Page 17
Engine/Driving (No. 4)	Page 18
Engine/Driving (No. 5)	Page 19
Hydraulic Pump (No. 1)	Page 20
Hydraulic Pump (No. 2)	Page 21
Hydraulic Pump (No. 3)	Page 22
Lever/Cover (No. 1)	Page 23
Lever/Cover (No. 2)	Page 24
Lever/Cover (No. 3)	Page 25
Lever/Cover (No. 4)	Page 26
Lever/Cover (No. 5)	Page 27
Lever/Cover (No. 6)	Page 28

TRANSMISSION (No. 1)



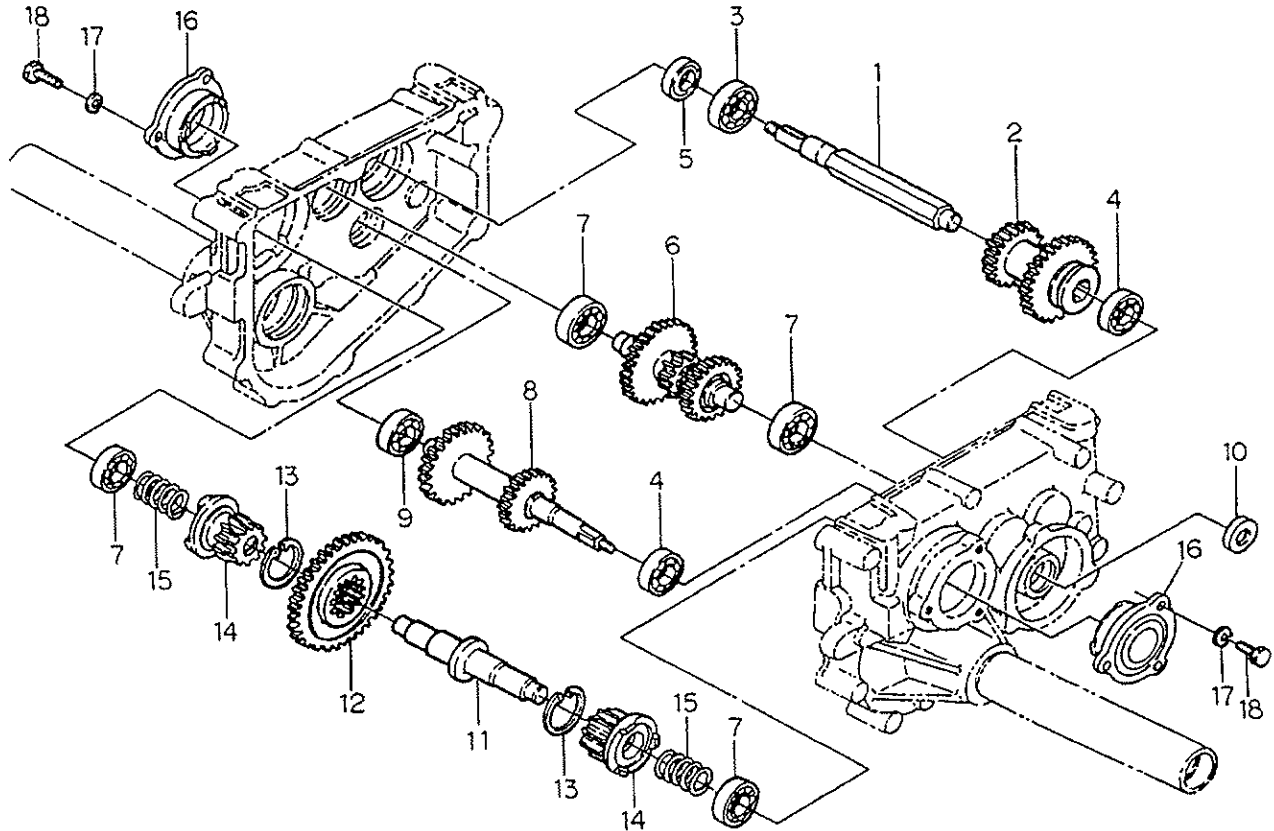
No.	Part No.	Part Description	Q'ty
1	0353-100-200-0	G.BOX ASSY	1
2	0353-110-210-0	Gear Case (L)	1
3	0353-110-220-0	Gear Case (R)	1
4	3614-101-005-0A	Plug	1
5	V720-101-900-6	O-ring P6	1
6	V200-260-601-0	Bolt M6 x 10	1
7	V201-260-809-0	Bolt M8 x 90	3
8	V201-260-811-5	Bolt M8 x 115	4
9	0353-110-011-1A	Brake cover support	1
10	V201-260-812-0	Bolt M8 x 120	1
11	V411-260-008-0	Washer 8	12
12	V401-160-008-0	Spring washer 8	8
13	V304-260-008-0	Nut M8	8
14	3740-111-030-0	Push rod metal	2
15	V720-101-901-0	O-ring P10	2
16	V720-102-401-6	O-ring P16	1
17	3560-102-029-1A	Oil cup	1
18	0343-115-011-0	Under guard	1
19	0353-130-011-0	Stopper base	1
20	0343-115-012-0	Brake wire holder	1

TRANSMISSION (No. 1)



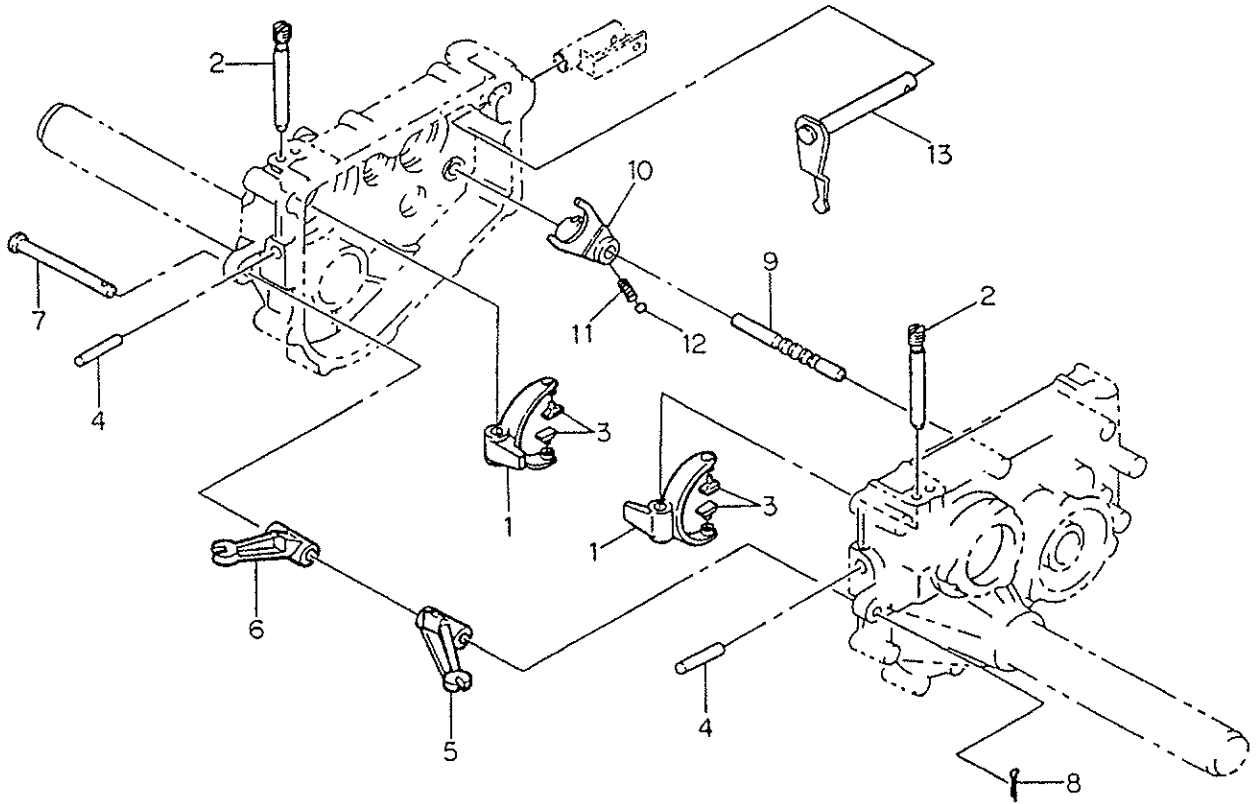
No.	Part No.	Part Description	Q'ty
21	V201-261-016-0	Bolt M10 x 160	2
22	V401-160-010-0	Spring washer 10	2
23	V304-260-010-0	Nut M10	2
24	V211-361-002-5	Bolt (SP) M10 x 25	1
25	V411-260-010-0	Washer 10	2
26	V363-260-010-0	Nut with washer M10	1

TRANSMISSION (No. 2)



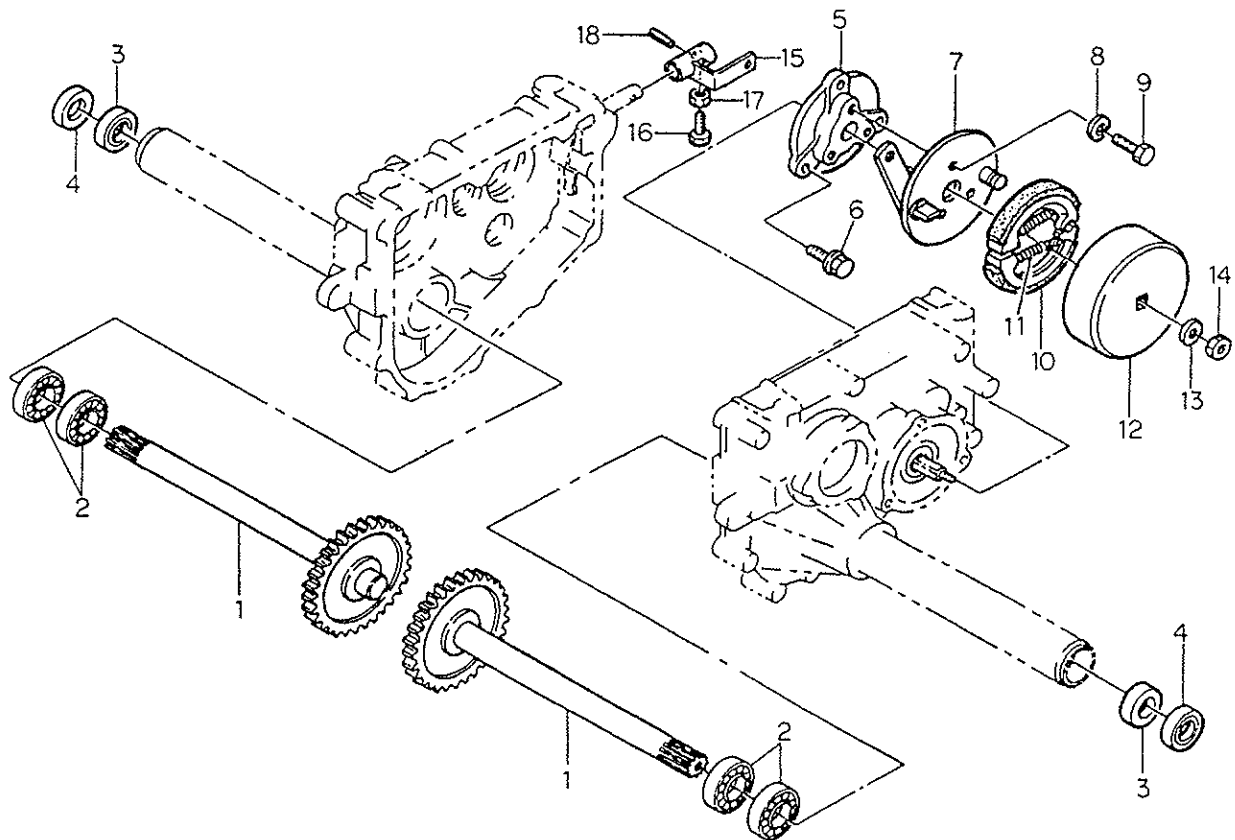
No.	Part No.	Part Description	Q'ty
1	0343-110-011-0	Input shaft	1
2	0353-110-012-0	Change gear (13-19)	1
3	V600-110-630-3	Bearing 6303	1
4	V600-110-620-2	Bearing 6202	2
5	0407-110-027-0	Oil seal (TC16.7)	1
6	0353-110-200-0	Pinion shaft	1
7	V600-110-620-3	Bearing 6203	4
8	0343-110-210-1	Back counter COMP	1
9	V600-110-600-3	Bearing 6003	1
10	V744-117-300-7	Oil seal TC17307	1
11	0353-110-013-1A	Side clutch shaft (450)	1
12	0353-110-015-0	Center gear	1
13	V705-140-037-0	Snap ring (hole)37	2
14	0353-110-014-0	Clutch gear (450)	2
15	3740-111-023-0A	Clutch spring	2
16	0343-110-013-0A	Brake metal	2
17	V401-160-008-0	Spring washer 8	6
18	0450-110-011-0	Lock bolt M8 x 25	6

TRANSMISSION (No. 3)



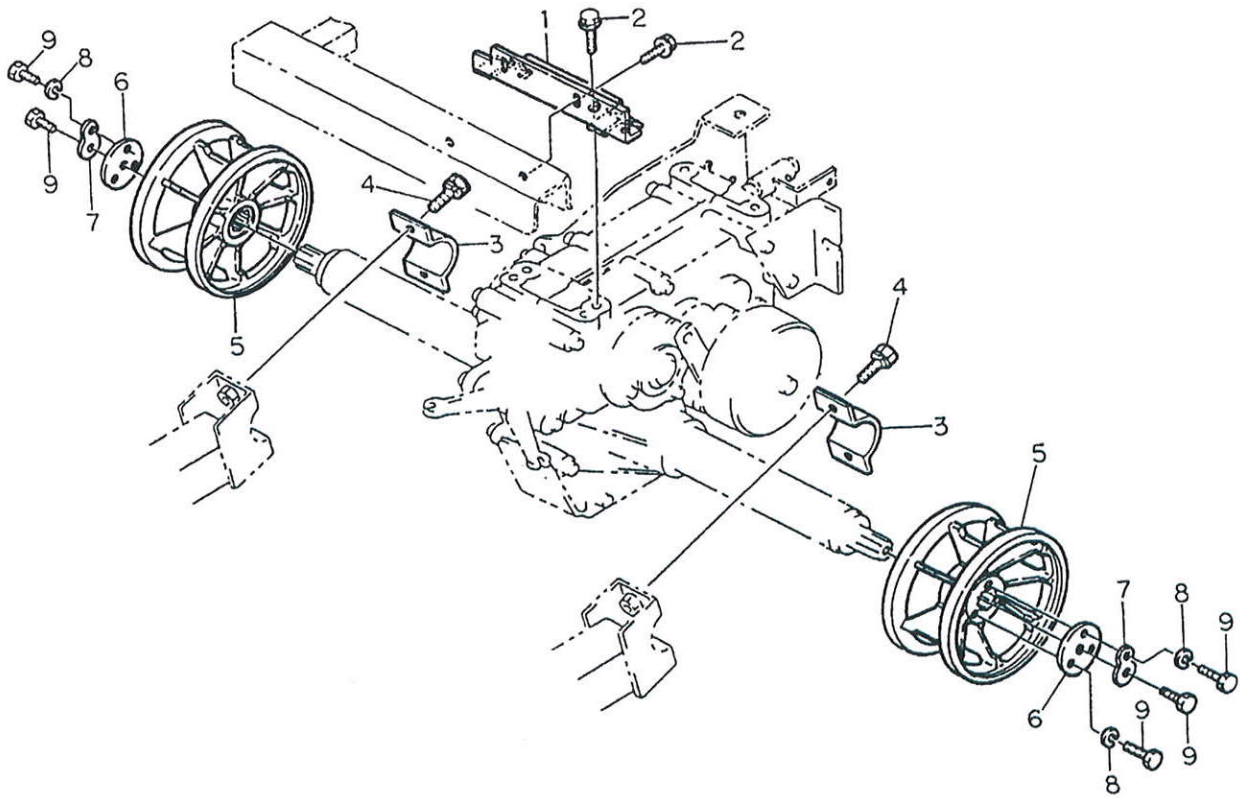
No.	Part No.	Part Description	Q'ty
1	3100-107-001-0	Shifter arm	2
2	0343-110-014-0A	Shifter arm pin	2
3	2703-101-020-0	Shifter collar	4
4	3740-111-029-0	Side clutch push rod	2
5	0472-110-012-0	Side clutch arm (L)	1
6	0472-110-013-0	Side clutch arm (R)	1
7	3517-501-002-1A	Clutch guide pin	1
8	V500-163-002-0	Split pin 3 x 20	1
9	0343-110-015-0	Change shift rod	1
10	0343-110-016-0	Change shifter	1
11	0439-110-021-1A	Shifter spring	1
12	V680-200-001-0	Steel ball 5/16	1
13	0343-110-220-1A	Change arm COMP	1

TRANSMISSION (No. 4)



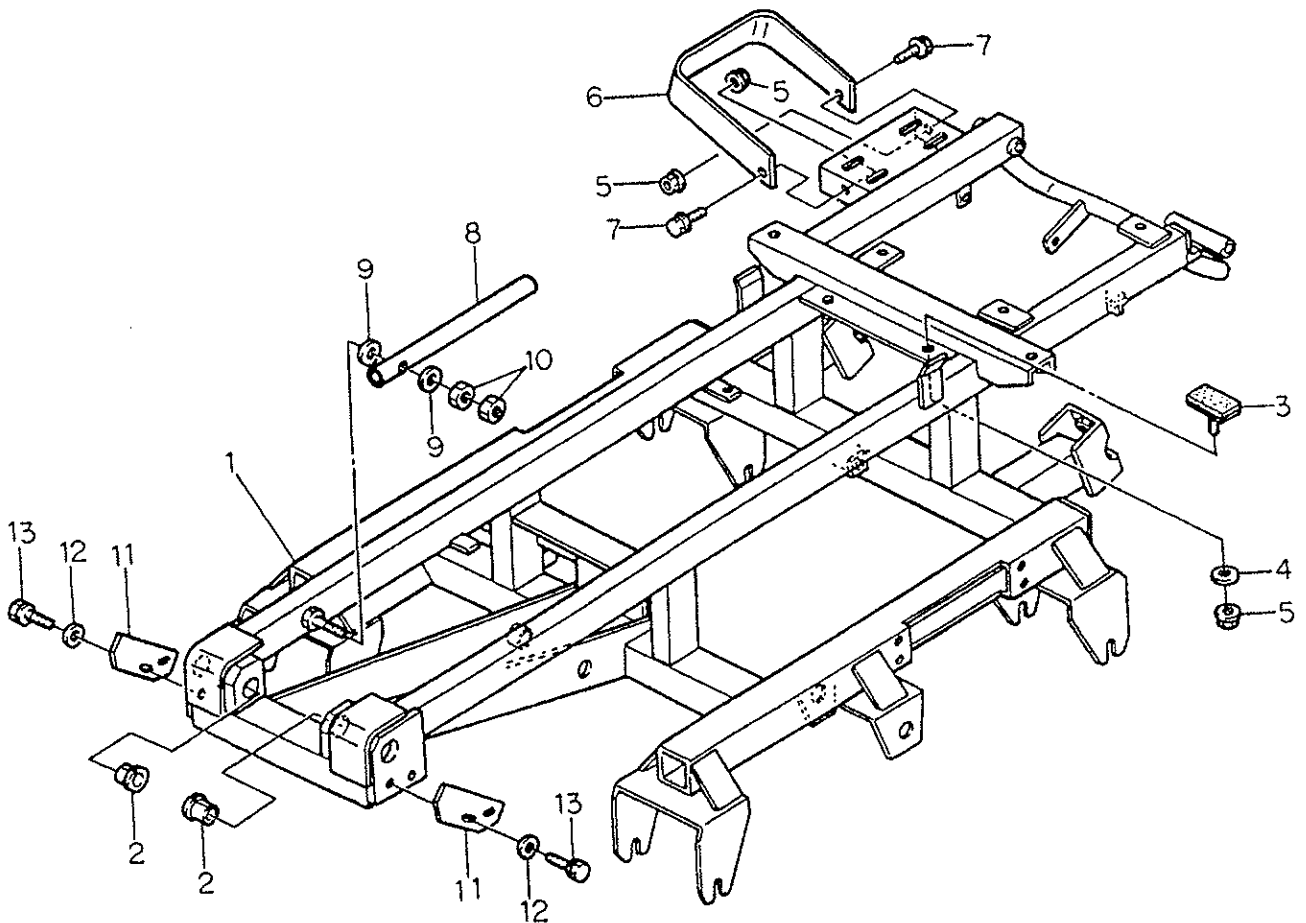
No.	Part No.	Part Description	Q'ty
1	0343-110-230-0B	Wheel shaft	2
2	V600-110-620-5	Bearing 6205	4
3	V744-125-350-7	Oil seal TC25357	2
4	V742-125-350-5	Oil seal VC25355	2
5	0343-115-013-0	Brake holder	1
6	V211-360-802-5	Bolt (SP) M8 x 25	3
7	0343-115-230-0A	Back plate COMP	1
8	V401-160-006-0	Spring washer 6	3
9	V200-460-601-6	Bolt M6 x 16 9T	3
10	0400-102-001-0	Brake shoe	2
11	0400-102-002-0	Brake shoe spring	2
12	0400-102-003-0	Brake drum	1
13	V411-260-010-0	Washer 10	1
14	0412-204-004-0	U-nut (M10)	1
15	0353-130-200-1B	Change arm (450)	1
16	V201-460-801-6	Bolt M8 x 16 9T	1
17	V303-260-008-0	Nut M8	1
18	V580-140-602-5	Spring pin (W) 6x 25	1

TRANSMISSION (No. 5)



No.	Part No.	Part Description	Q'ty
1	0353-130-210-0	Wire holder	1
2	V211-361-002-5	Bolt (SP) M10 x 25	4
3	0351-115-012-1	Wheel pipe holder 43	2
4	V211-261-002-5	Bolt (S) M10 x 25	4
5	0354-120-011-6F	Wheel sprocket	2
6	0354-120-013-0	Sprocket holder (B)	2
7	3051-102-009-0	Locking plate	2
8	V401-160-008-0	Spring washer 8	6
9	V201-460-802-0	Bolt M8 x 20 9T	8

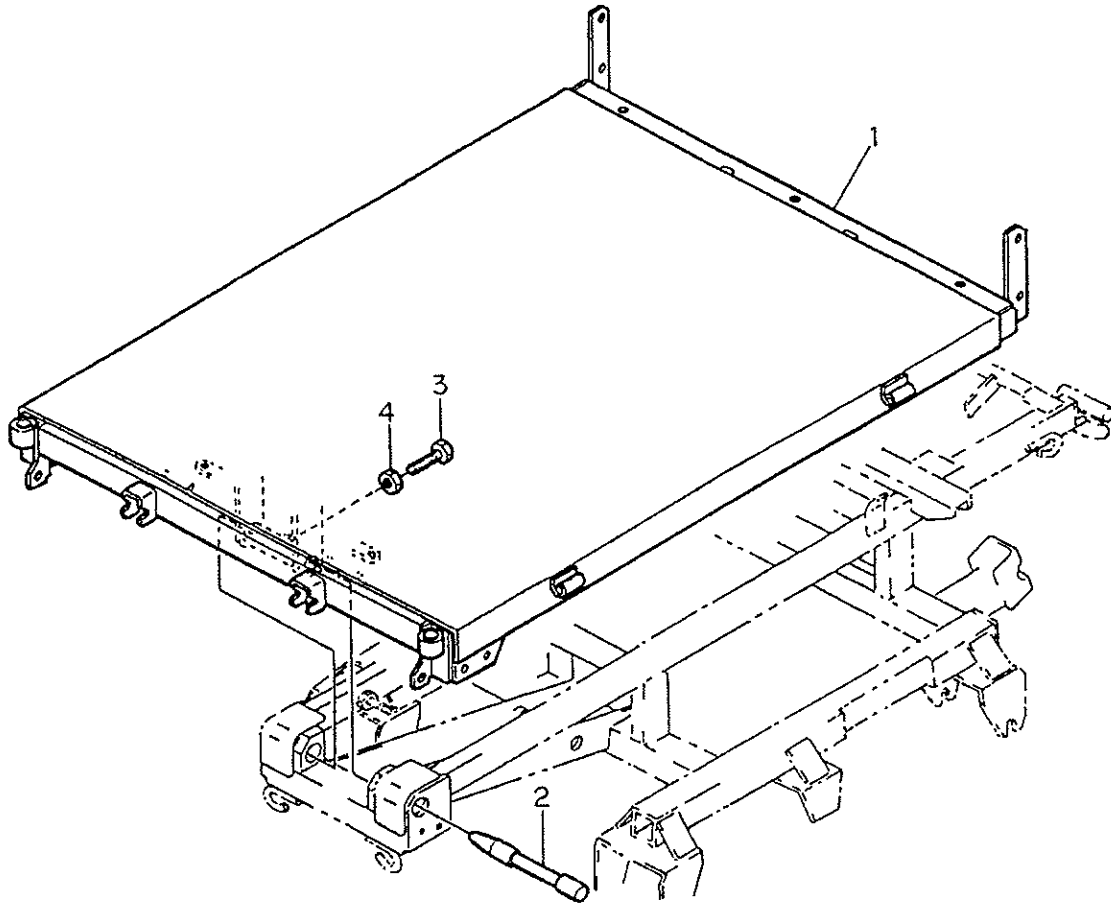
FRAME (No. 1)



FRAME (No.1)

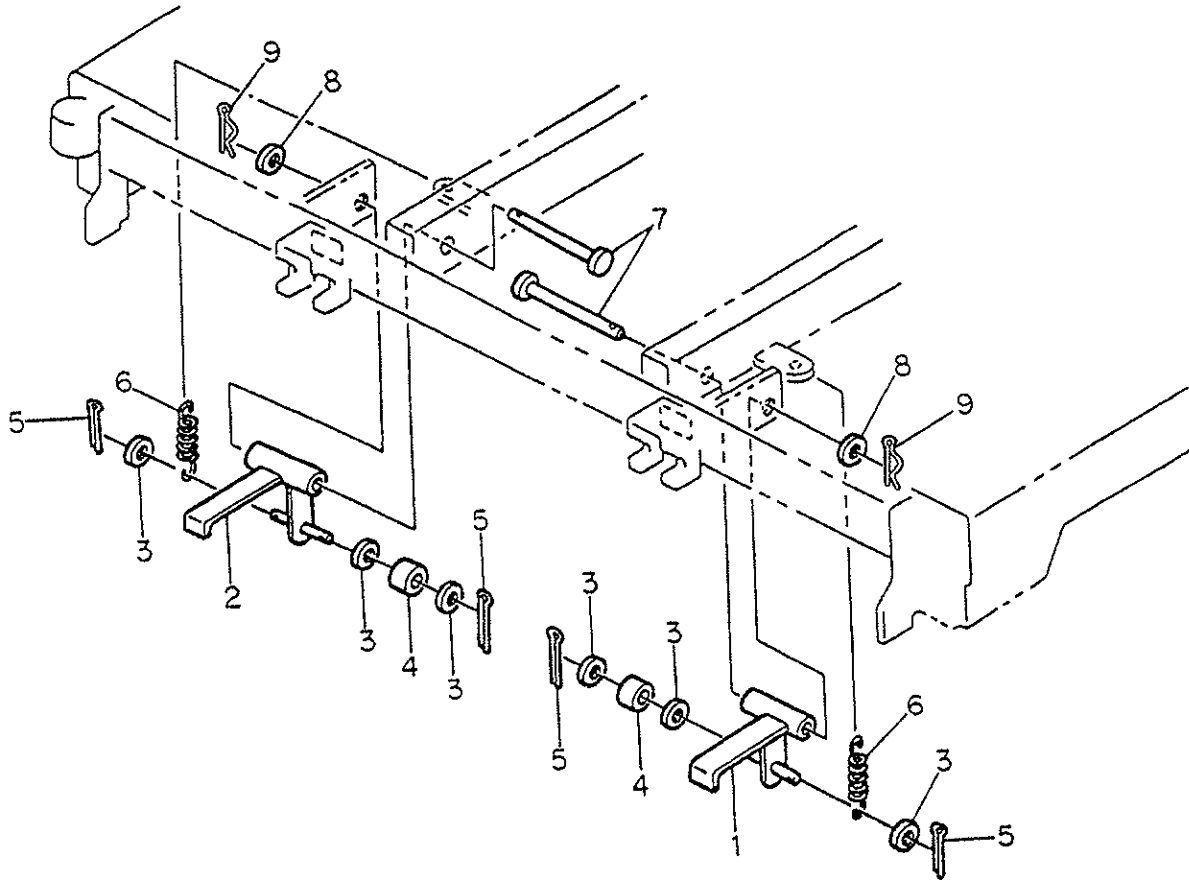
No.	Part No.	Part Description	Q'ty
1	0353-211-250-0A	Frame (XG500D)COMP	1
2	0450-301-011-0	Flange bush 20	2
3	0452-210-250-0	Rubber	2
4	3782-131-014-0	Link	2
5	V362-260-008-0	Nut with washer M8	4
6	0353-211-011-0	Pomp Guard	1
7	V211-360-802-0	Bolt (SP) M8 x 20	2
8	0353-211-012-0	Safety pipe	1
9	V410-260-012-0	Washer 12	2
10	V303-260-012-0	Nut M12	2
11	0344-210-011-2C	Dump cam	2
12	3731-551-008-0	Washer 12	4
13	V211-260-801-6	Bolt (S) M8 x 16	4

FRAME (No. 2)



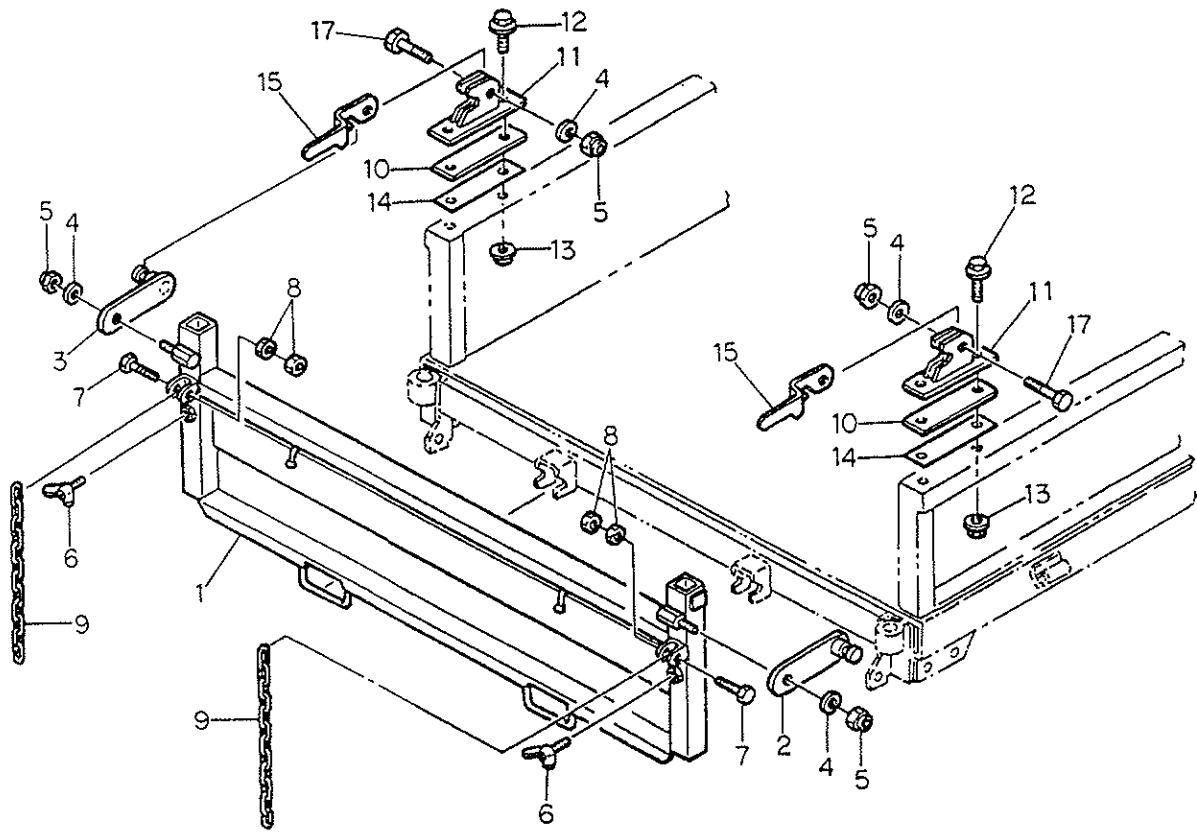
No.	Part No.	Part Description	Q'ty
1	0353-253-200-2C	Carrier (450D)	1
2	0344-250-011-0	Arm point jig	1
3	V201-460-802-5	Bolt M8 x 25 9T	1
4	V304-260-008-0	Nut M8	1

FRAME (No. 3)



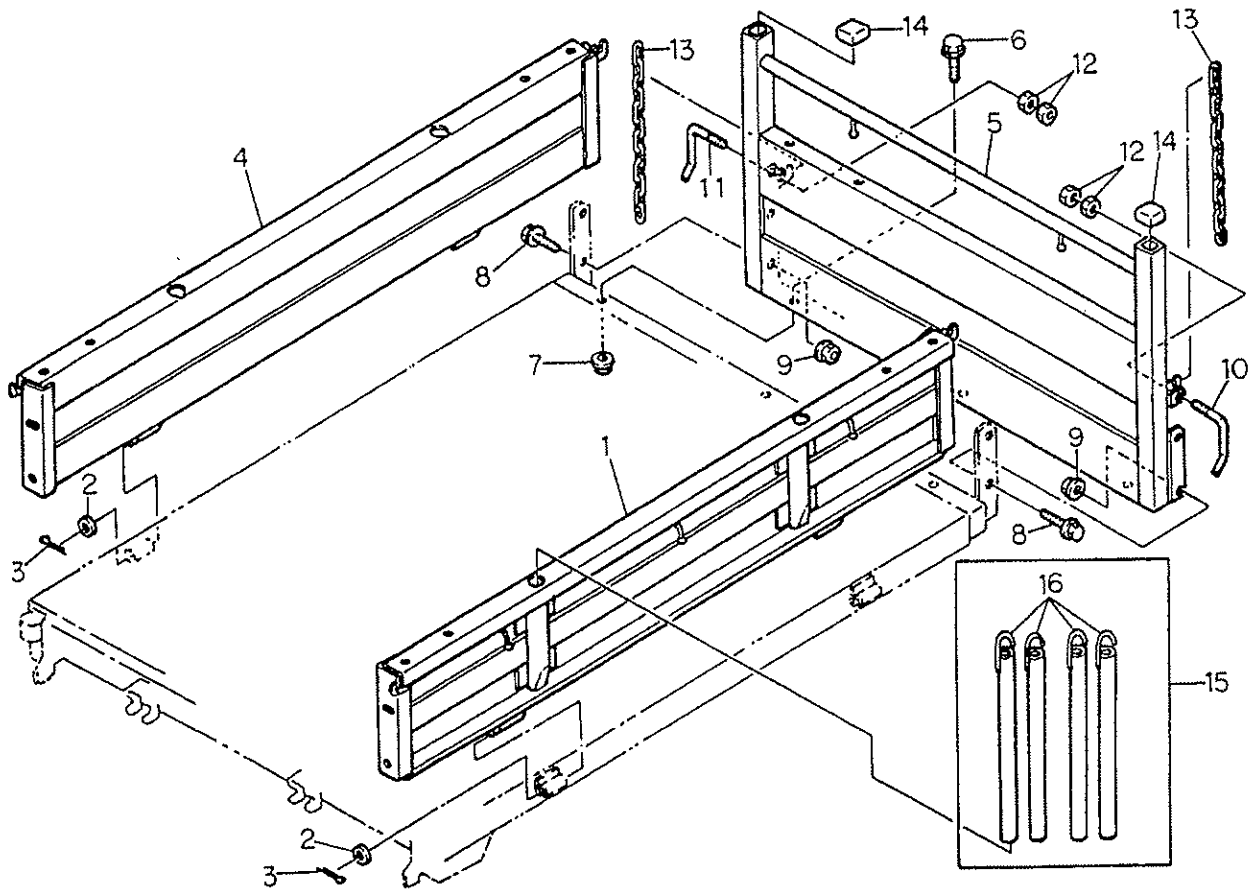
No.	Part No.	Part Description	Q'ty
1	0344-255-200-0	Gate lock arm (L)COMP	1
2	0344-255-210-0	Gate lock arm (R)COMP	1
3	V411-260-008-0	Washer 8	6
4	0375-255-011-0	Rollar	2
5	V500-162-502-0	Split pin (2.5 x 20)	4
6	8935-042-034-0	Spring	2
7	0365-303-001-0	Pin	2
8	V411-260-012-0	Washer 12	2
9	1305-241-001-0A	Hair pin	2

FRAME (No. 4)



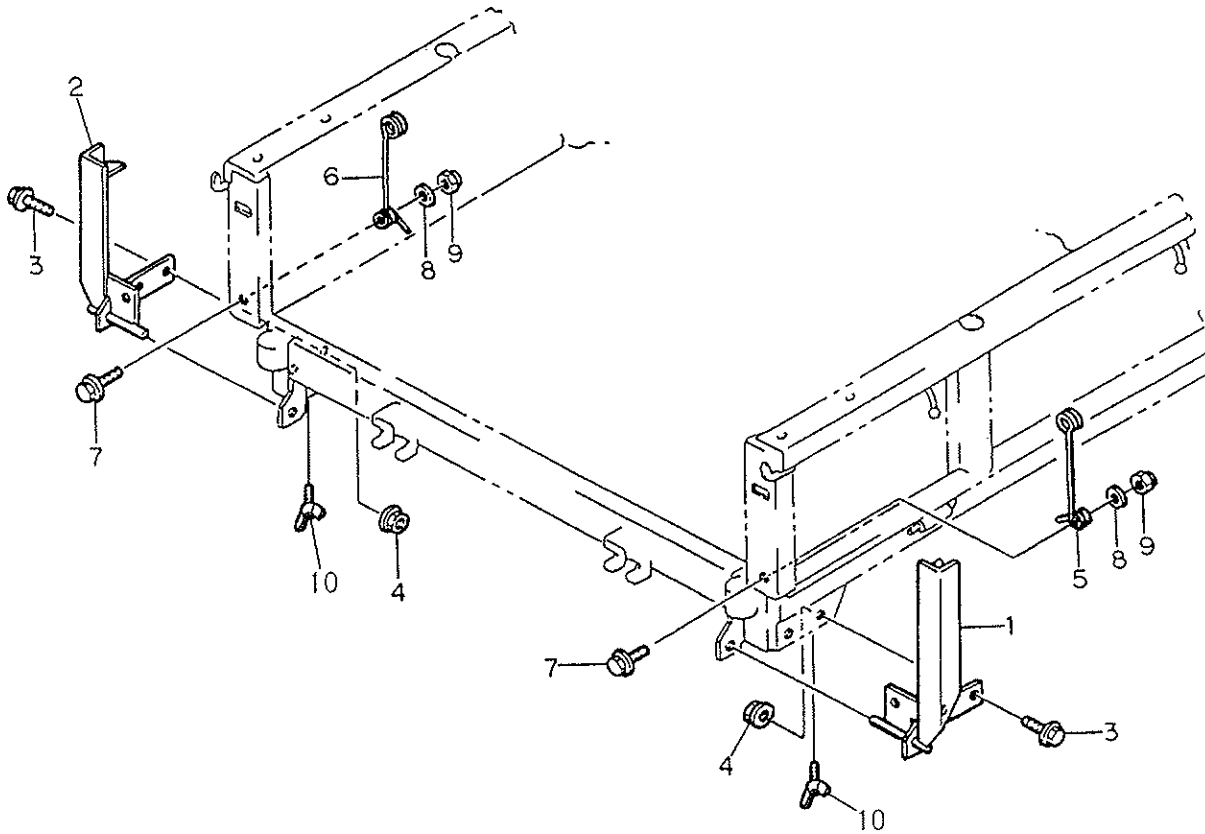
No.	Part No.	Part Description	Q'ty
1	0344-260-200-1A	Front Frame COMP	1
2	0347-262-200-0	Arm (L)COMP	1
3	0347-262-210-0	Arm (R)COMP	1
4	3911-550-015-0A	Washer	4
5	0412-204-004-0	U-nut M10	4
6	V271-160-802-0	Bolt M8 x 20	2
7	V201-261-004-0	Bolt M10 x 40	2
8	V304-260-010-0	Nut M10	4
9	0360-202-004-0	Fook chain	2
10	0437-277-201-0	Plate	2
11	0437-277-200-0	Fulcrum holder	2
12	V211-361-002-5	Bolt (SP) M10 x 25	4
13	V362-260-010-0	Nut with washer M10	4
14	0437-277-011-0	Spacer	2
15	0437-277-012-0	Rear gate lever (L)	1
16	0437-277-013-0	Rear gate lever (R)	1
17	0412-204-003-0	Fulcrum bolt	2

FRAME (No. 5)



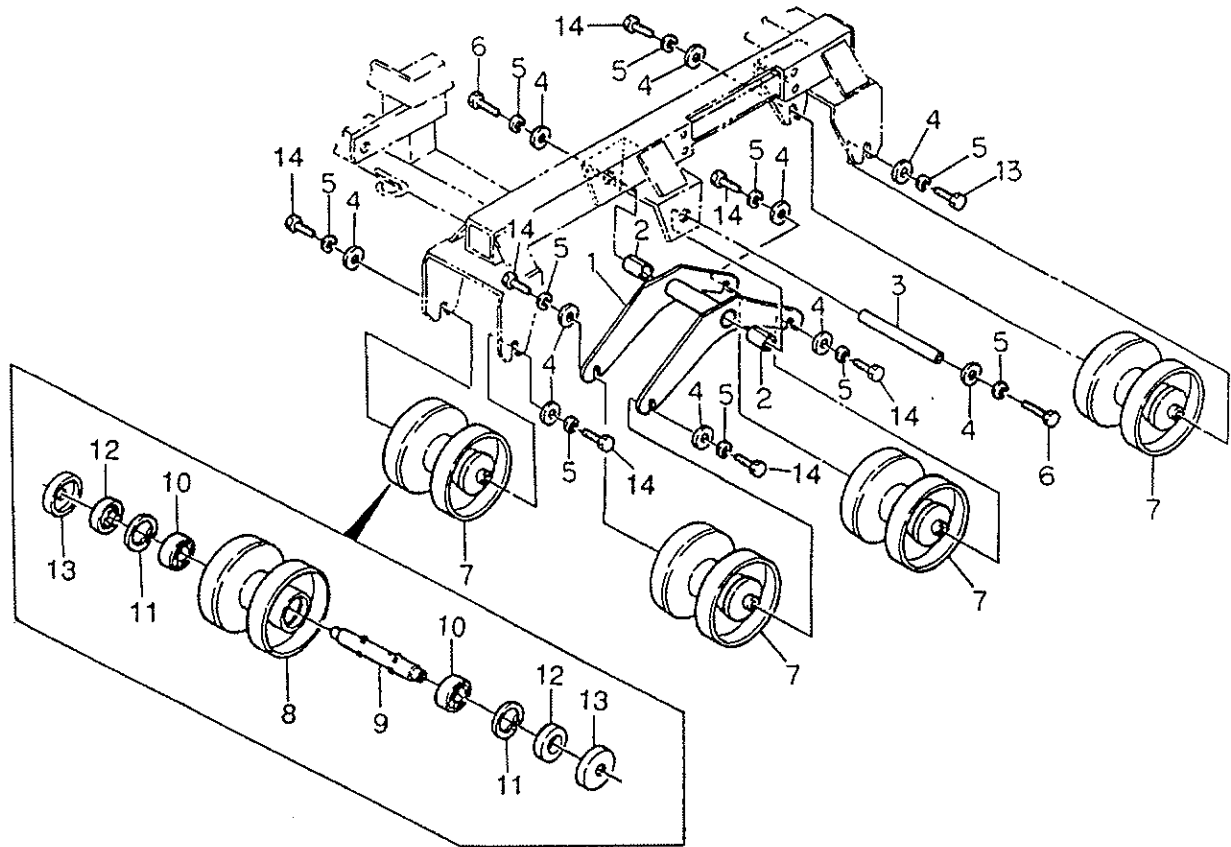
No.	Part No.	Part Description	Q'ty
1	0344-260-220-1B	Side frame (L)	1
2	V411-260-010-0	Washer	2
3	V500-162-502-0	Split pin 2.5 x 20	2
4	0344-260-230-1B	Side frame (R)	1
5	0353-260-200-1A	Rear frame	1
6	V211-360-802-0	Bolt (SP) M8 x 20	3
7	V363-260-008-0	Nut with washer M8	3
8	V211-361-002-5	Bolt (SP) M10 x 25	4
9	V363-260-010-0	Nut with washer M10	4
10	0366-302-011-0	Set lever (S)L	1
11	0366-302-012-0	Set lever (S)R	1
12	V304-260-010-0	Nut M10	4
13	0360-202-004-0	Fook chain	2
14	0342-260-011-0	Cap 32	2
15	0453-200-220-0A	Pipe SET	1
16	0432-204-240-0A	Pipe	4

FRAME (No. 6)



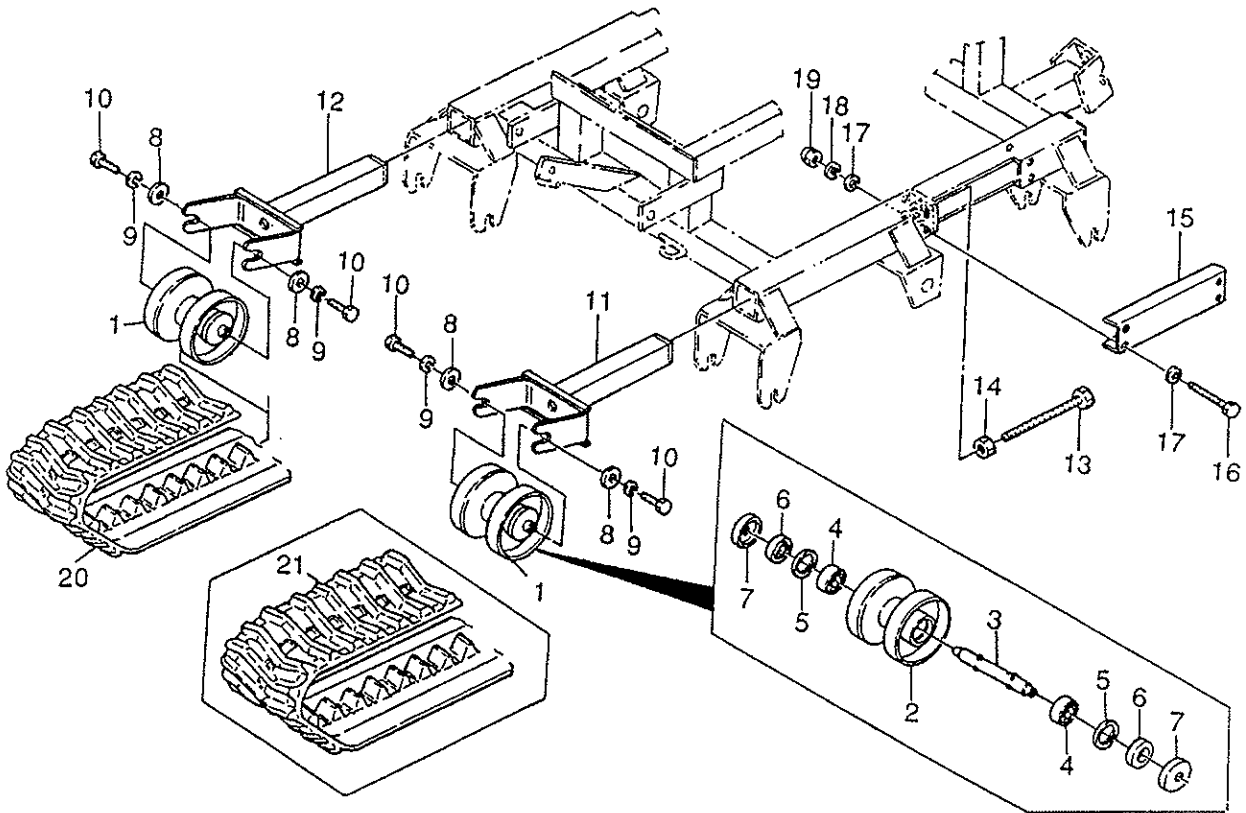
No.	Part No.	Part Description	Q'ty
1	0344-268-200-1A	Vertical locker (L)	1
2	0344-268-210-1A	Vertical locker (R)	1
3	V211-261-002-5	Bolt (SP) M10 x 25	4
4	V362-260-010-0	Nut with washer M10	4
5	0344-268-011-1A	Spring (L)	1
6	0344-268-012-1A	Spring (R)	1
7	V211-160-802-5	Bolt (P) M8 x 25	2
8	V411-260-008-0	Washer 8	2
9	1122-725-012-0	U-nut M8	2
10	V271-160-802-0	B-bolt M8 x 20	2

ROLLER, CRAWLER (No. 1)



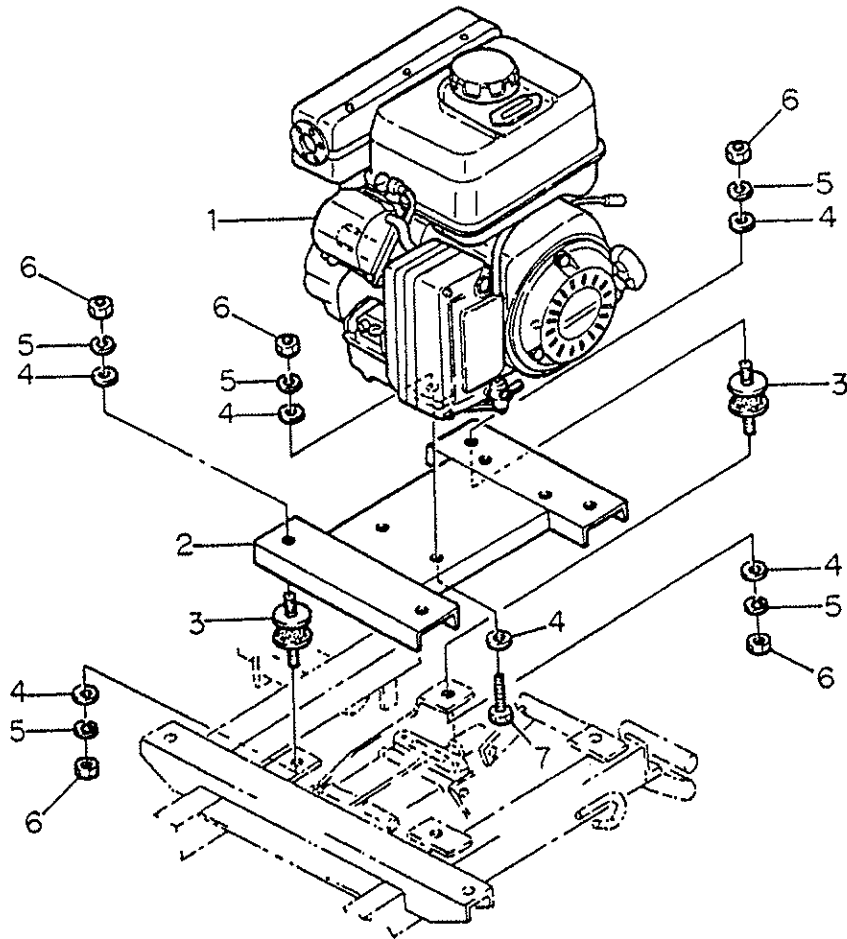
No.	Part No.	Part Description	Q'ty
1	0353-310-200-1A	Equalizer	2
2	0354-310-011-0	Bush (25 x 28 x 30)	4
3	0354-310-015-0	Equalizer fixing pin	2
4	3768-361-029-0	Washer (for rotor fixing)	20
5	V401-160-010-0	Spring washer 10	20
6	V203-461-002-5	Bolt (fine) M10 x 1.25 x 25 9T	4
7	0354-300-001-0	Roller (XG)Assy	8
8	0354-310-210-1A	Roller (150 x 142)	8
9	0354-310-013-1A	Shaft (20 x 160)	8
10	V600-110-620-4	Bearing 6204	16
11	V705-140-047-0	Snap ring (Hole) 47	16
12	V742-120-470-6	Oil seal SC20476	16
13	0354-310-014-0	Dust cover	16
14	V203-461-002-0	Bolt (fine) M10 x 1.25 x 20 9T	16

ROLLER, CRAWLER (No. 2)



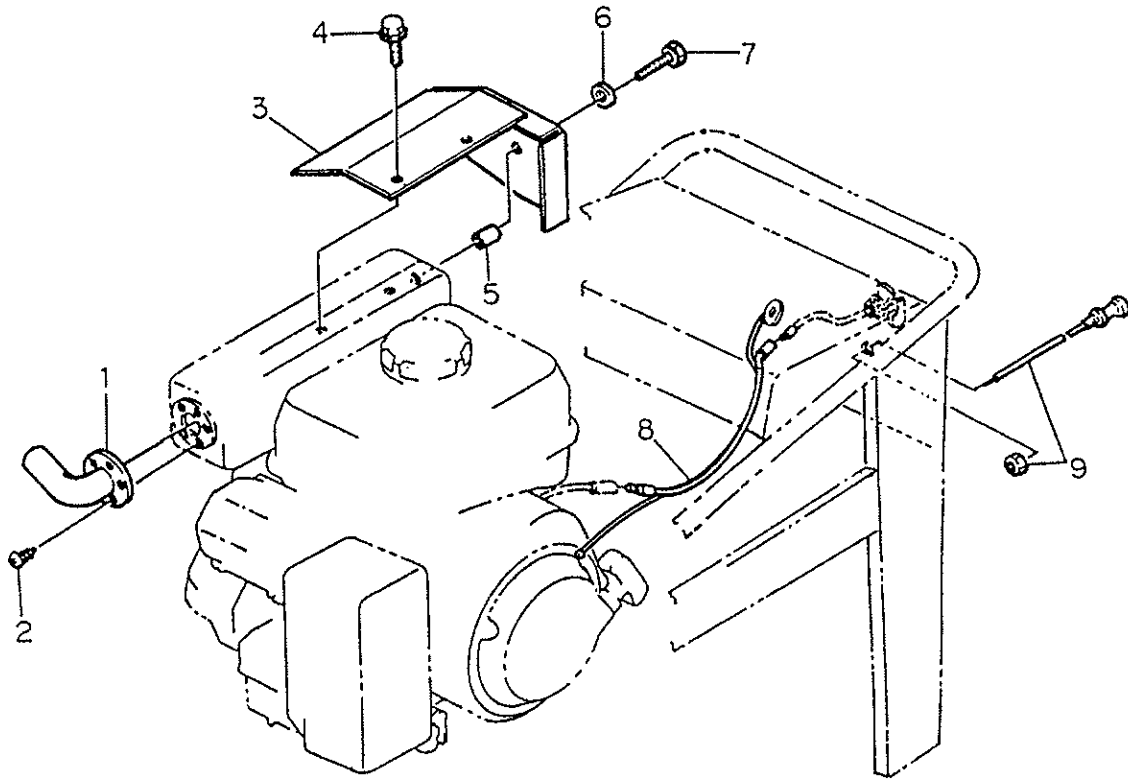
No.	Part No.	Part Description	Q'ty
1	0354-300-002-0	Idle roller (XG)Assy	2
2	0354-310-210-1A	Idle roller (150 x 142)	2
3	0354-330-011-1A	Idle roller shaft	2
4	V600-110-620-4	Bearing 6204	4
5	V705-140-047-0	Snap ring (hole) 47	4
6	V742-120-470-6	Oil seal SC20476	4
7	0354-310-014-0	Dust cover	4
8	3768-361-029-0	Washer (for rotor fixing)	4
9	V401-160-010-0	Spring washer 10	4
10	V203-461-002-0	Bolt (fine) M10 x 1.25 x 20 9T	4
11	0353-340-200-0	Idler rod (L)	1
12	0353-340-210-0	Idler rod (R)	1
13	0354-340-011-1A	Tension bolt	2
14	V303-260-016-0	Nut M16	2
15	0354-340-223-0	Truck frame cover	2
16	V201-260-807-5	Bolt M8 x 75	8
17	V411-260-008-0	Washer 8	16
18	V401-160-008-0	Spring washer 8	8
19	V340-160-008-0	Cap nut M8	8
20	0353-350-200-0	Crawler 200 x 39 x 72	2
21	0353-351-200-0	Crawler T 250 x 39 x 72	Option 2

ENGINE/DRIVING (No. 1)



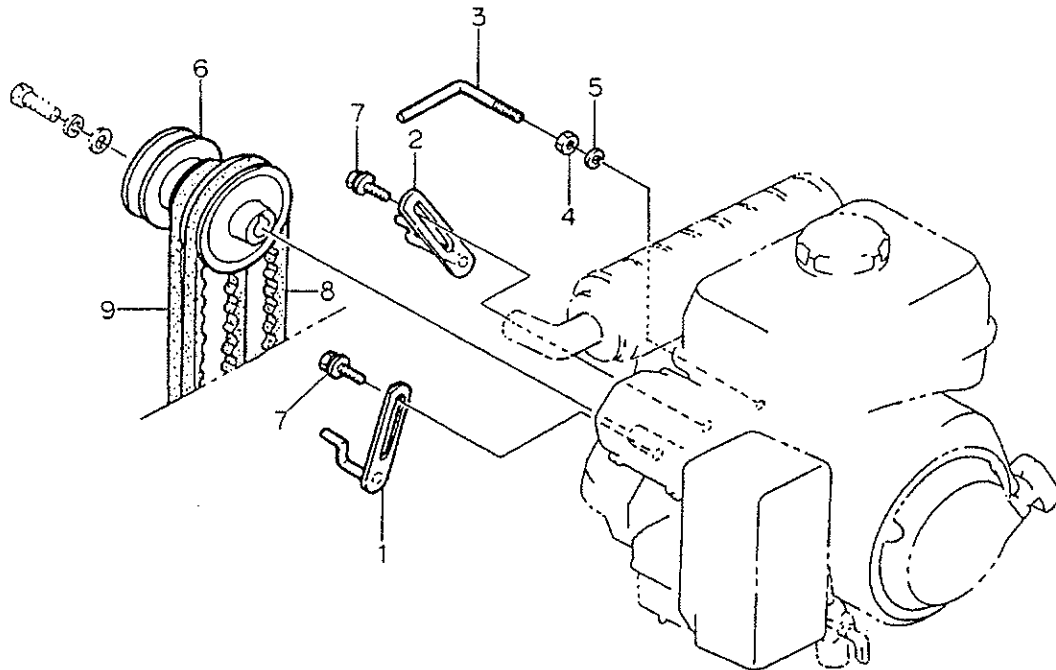
No.	Part No.	Part Description	Q'ty
1	0354-410-200-1A	Engine (FE5.6) Kawasaki FE170G-X	1
2	0353-420-200-1B	Engine base	1
3	0437-420-011-0A	Vibration rubber	4
4	V411-260-008-0	Washer 8	16
5	V401-160-008-0	Spring washer 8	12
6	V304-260-008-0	Nut M8	12
7	V201-260-804-5	Bolt M8 x 45	4

ENGINE/DRIVING (No. 2)



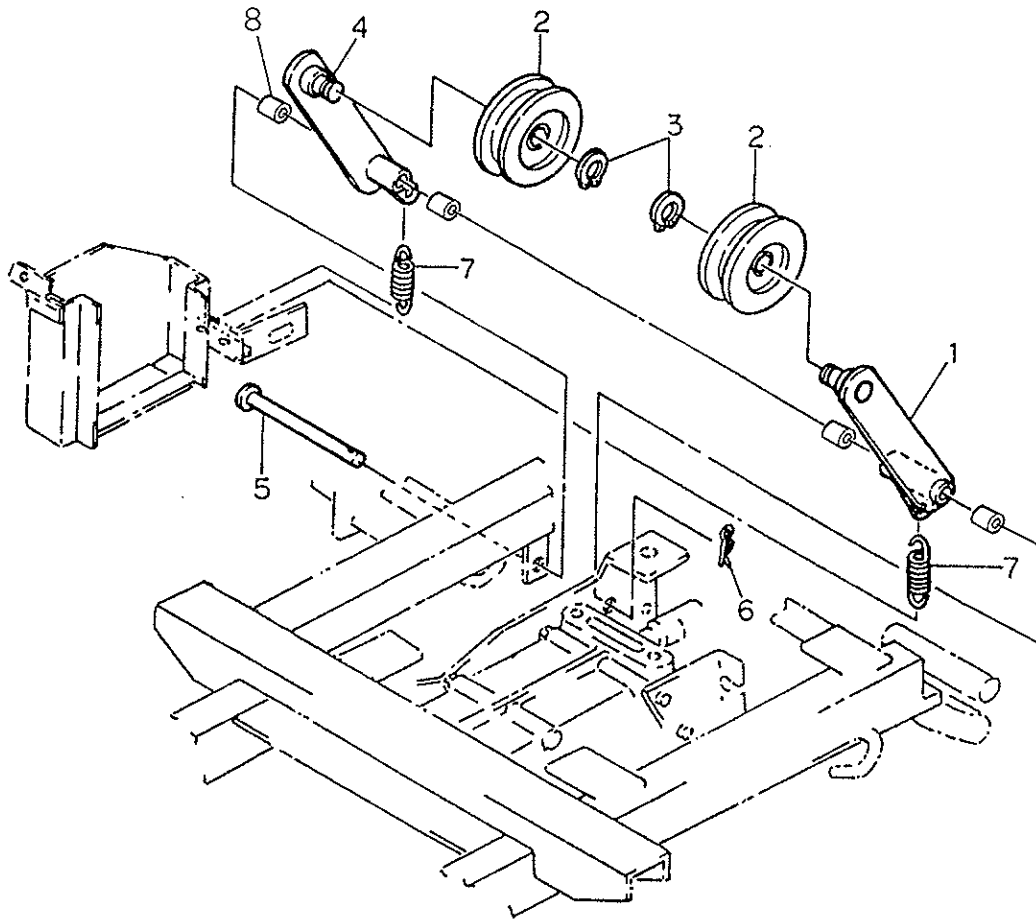
No.	Part No.	Part Description	Q'ty
1	0354-421-300-0	Tail pipe (600)COMP	1
2	V195-144-010-3	Tapping screw (4 x 10)	5
3	0354-421-310-0	Exhaust guide (600)	1
4	V210-360-601-2	Bolt (SP) M6 x 12	2
5	0354-421-011-0	Collar (7 x 11 x 15)	1
6	V411-260-006-0	Washer 6	1
7	V210-250-602-5	Bolt (S) M6 x 25	1
8	0354-421-330-0	Stop cord (600)	1
9	0312-623-018-1A	Cable (throttle)	1

ENGINE/DRIVING (No. 3)



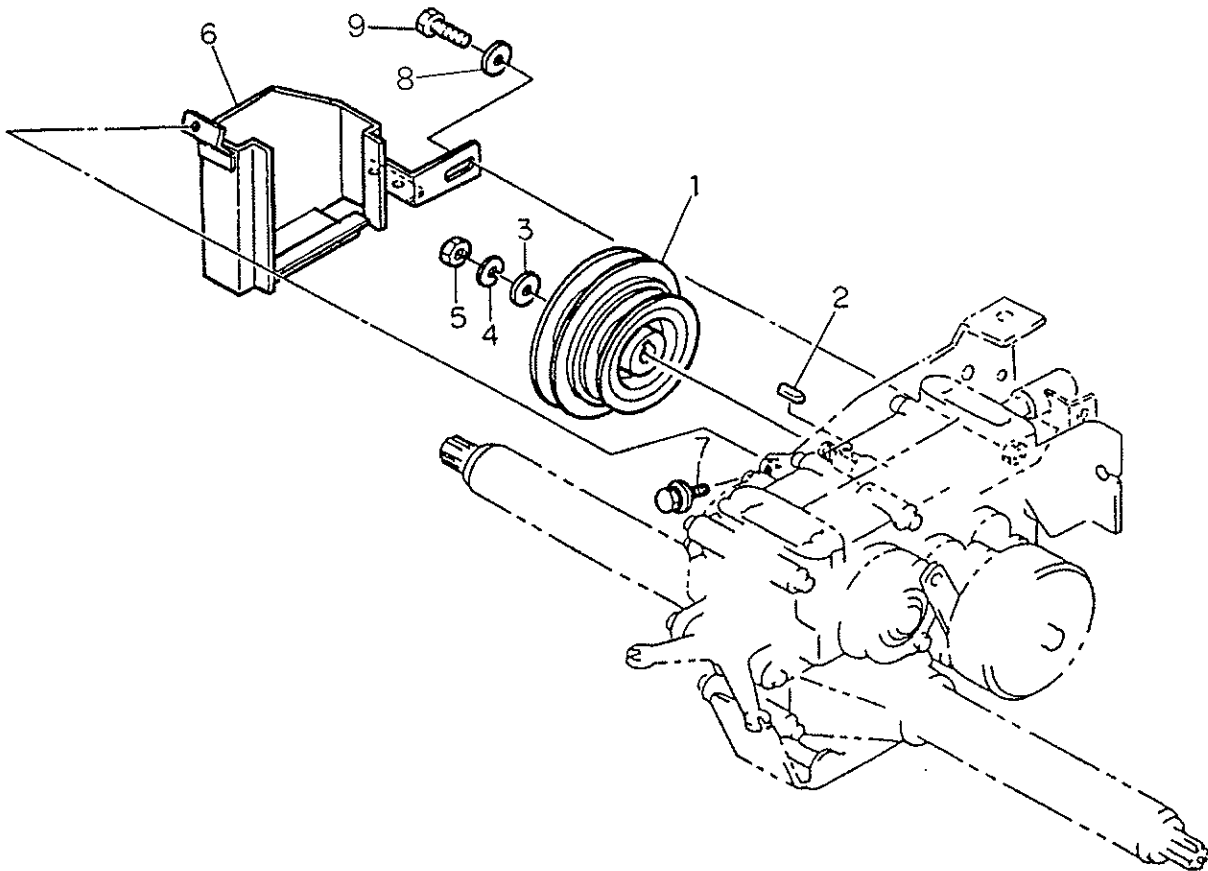
No.	Part No.	Part Description	Q'ty
1	0353-510-200-0	Belt stopper (Front)	1
2	0347-510-210-0	Belt stopper (Rear)	1
3	0354-510-014-1A	Belt stopper (L)	1
4	V304-260-008-0	Nut M8	1
5	V401-160-008-0	Spring washer 8	1
6	0353-510-011-1A	Engine pulley (XG450)	1
7	V211-360-801-6	Bolt (SP) M8 x 16	2
8	0353-510-012-0	Belt (SB30HP4)	1
9	0353-510-013-0	Belt (SB31HP4)	1

ENGINE/DRIVING (No. 4)



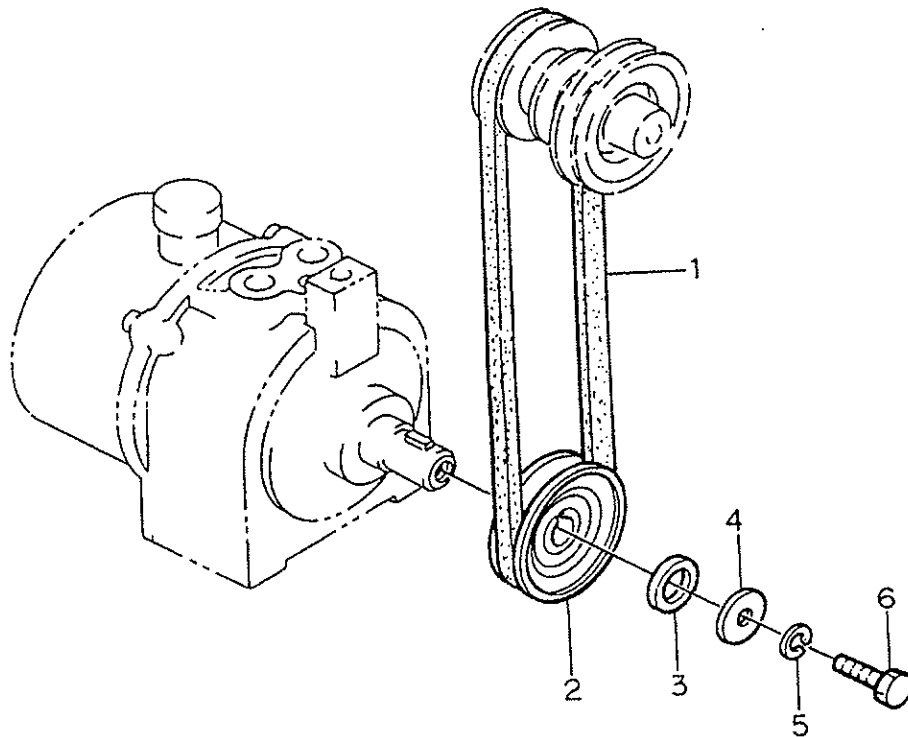
No.	Part No.	Part Description	Q'ty
1	0353-511-250-0	Tension arm (500L)	1
2	8935-004-026-0	Counter tension pulley	2
3	V704-140-015-0	Snap ring (jig) 15	2
4	0353-511-260-0	Tension arm (500R)	1
5	0450-502-012-0	Clutch lever pin	1
6	1305-241-001-0A	Hair pin	1
7	8935-004-048-0	Cover spring	2
8	8935-008-014-0	Bush	4

ENGINE/DRIVING (No. 5)



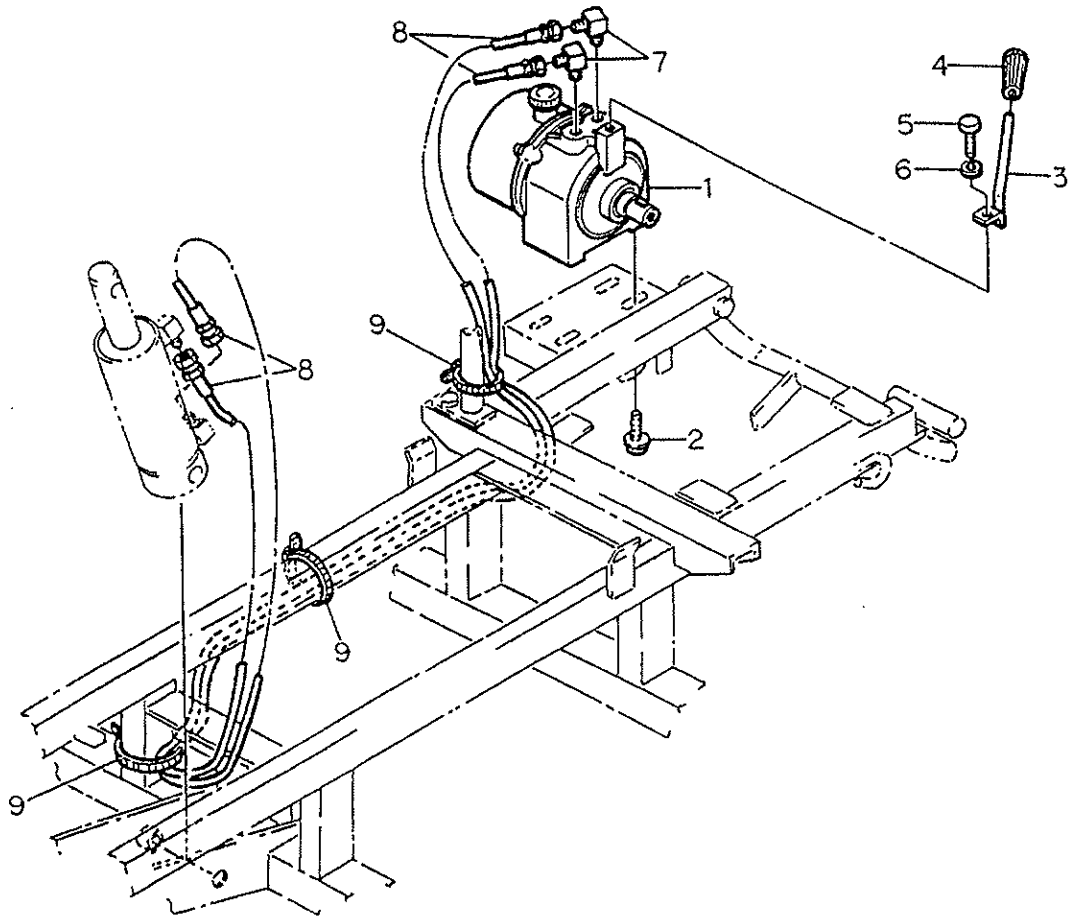
No.	Part No.	Part Description	Q'ty
1	0353-513-011-0	M-pulley (FE120)	1
2	8935-013-015-0	Coupling key	1
3	8935-001-062-0	Metal washer	1
4	V401-160-010-0	Spring washer 10	1
5	V300-260-010-0	Nut M10	1
6	0353-512-200-1A	Belt cover	1
7	V211-360-802-0	Bolt (SP) M8 x 20	1
8	8935-056-025-0	Link (20)	1
9	V211-260-802-0	Bolt (S) M8 x 20	1

HYDRAULIC PUMP (No. 1)



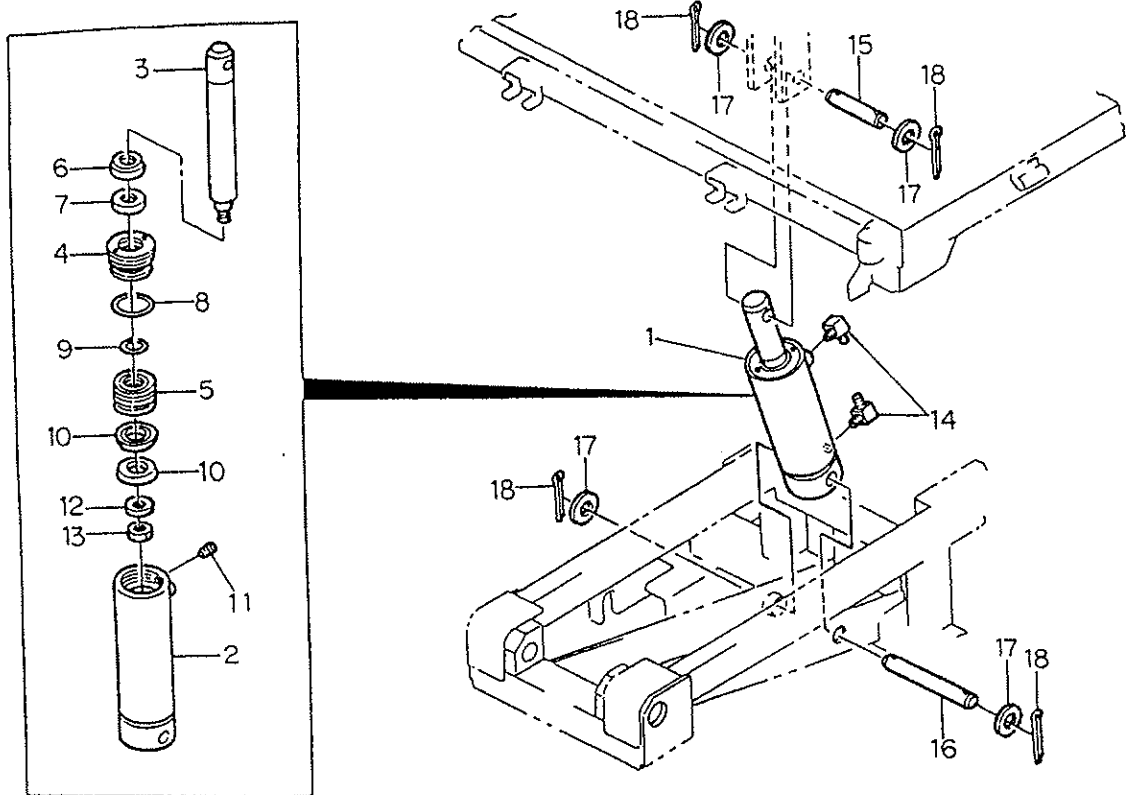
No.	Part No.	Part Description	Q'ty
1	V811-000-015-0	V-belt A-15	1
2	0347-520-200-0B	Pump pulley	1
3	0347-520-011-0	Collar (21 x 30 x 5)	1
4	0325-501-006-0	Link (10)	1
5	V401-160-010-0	Spring washer 10	1
6	V201-261-001-6	Bolt M10 x 16	1

HYDRAULIC PUMP (No. 2)



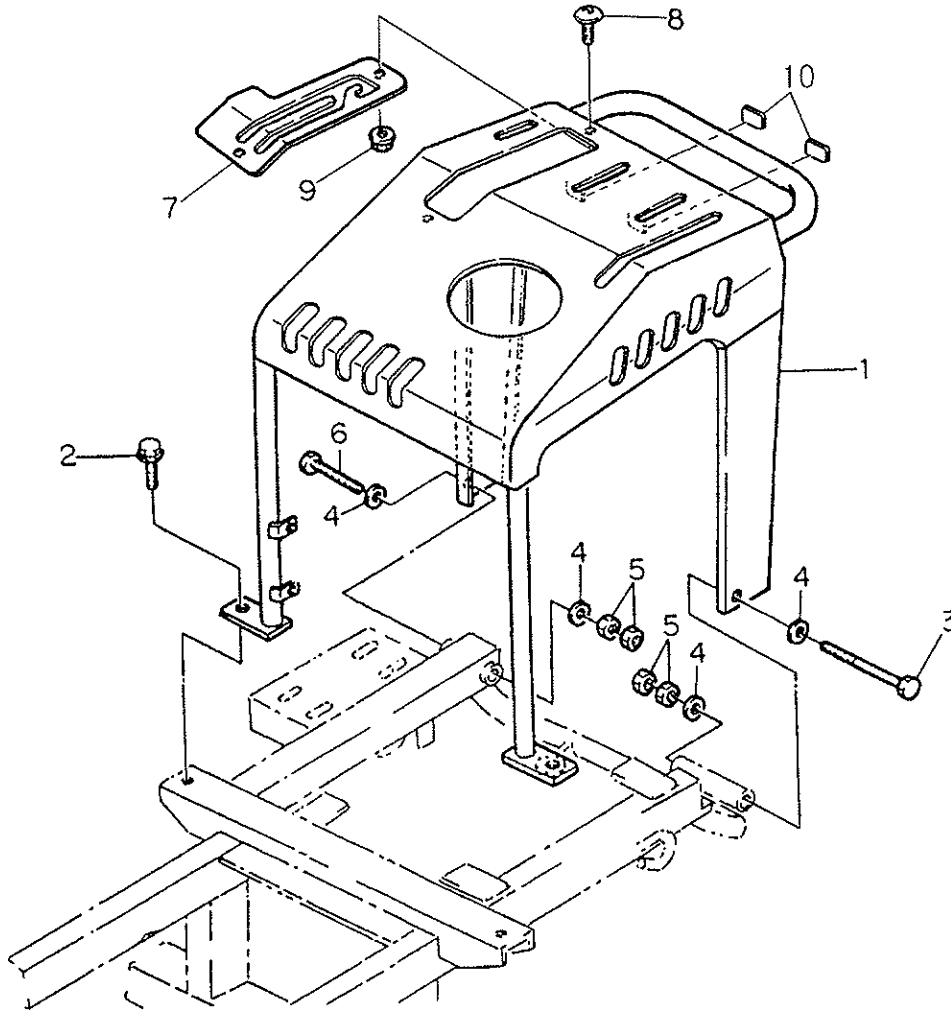
No.	Part No.	Part Description	Q'ty
1	0344-530-200-0	Hydraulic pump (H130R)	1
2	V211-360-802-0	Bolt (SP) M8 x 20	4
3	0347-530-200-2B	Handle	1
4	3640-585-001-0A	Grip (yellow)	1
5	V201-261-002-0	Bolt M10 x 20	1
6	V401-160-010-0	Spring washer 10	1
7	0412-205-009-0	90° elbow	2
8	0551-530-013-0	Hose (1600)	2
9	0325-503-004-1	Repeat tie	4

HYDRAULIC PUMP (No. 3)



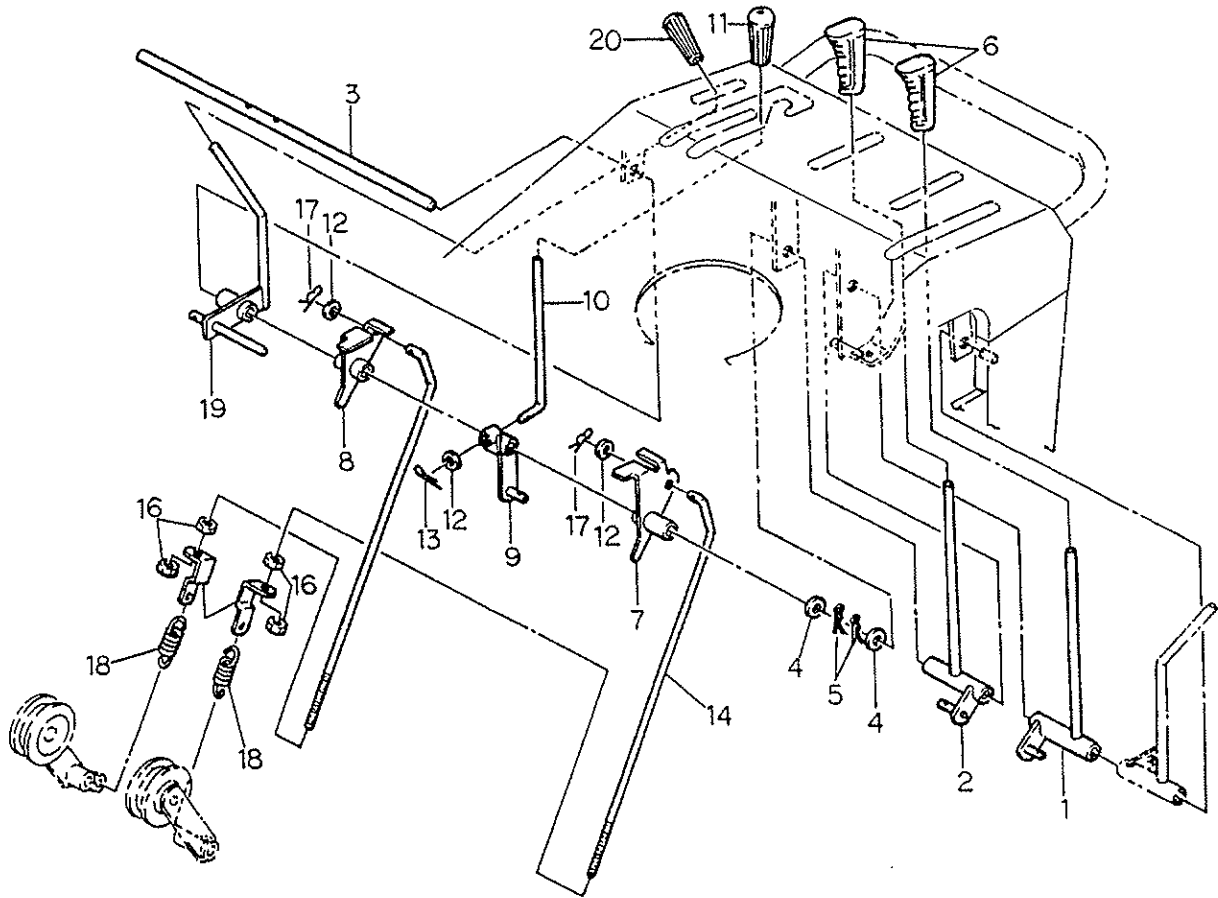
No.	Part No.	Part Description	Q'ty
1	0347-530-300-2C	Cylinder (155-300)Assy	1
2	0315-303-240-1B	Cylinder sub COMP	1
3	0347-530-301-1A	Rod (294)	1
4	0315-303-222-0	Rod cover	1
5	0315-303-223-1A	Piston	1
6	0315-303-224-0	Dust seal 35	1
7	0315-303-225-0	U packing 35	1
8	V721-103-105-8	O-ring G58	1
9	V720-102-402-0	O-ring P20	1
10	0315-303-226-0	U packing 63	2
11	0433-025-013-0	Screw	1
12	V411-260-016-0	Washer 16	1
13	V332-460-016-0	Nut (fine) M16 x 1.5 7T	1
14	0412-205-009-0	90° elbow	2
15	0344-530-014-0A	Cylinder rod pin	1
16	0344-530-013-0A	Cylinder head pin	1
17	V411-260-020-0	Washer 20	4
18	V500-165-003-0	Sprit pin 5 x 30	4

LEVER/COVER (No. 1)



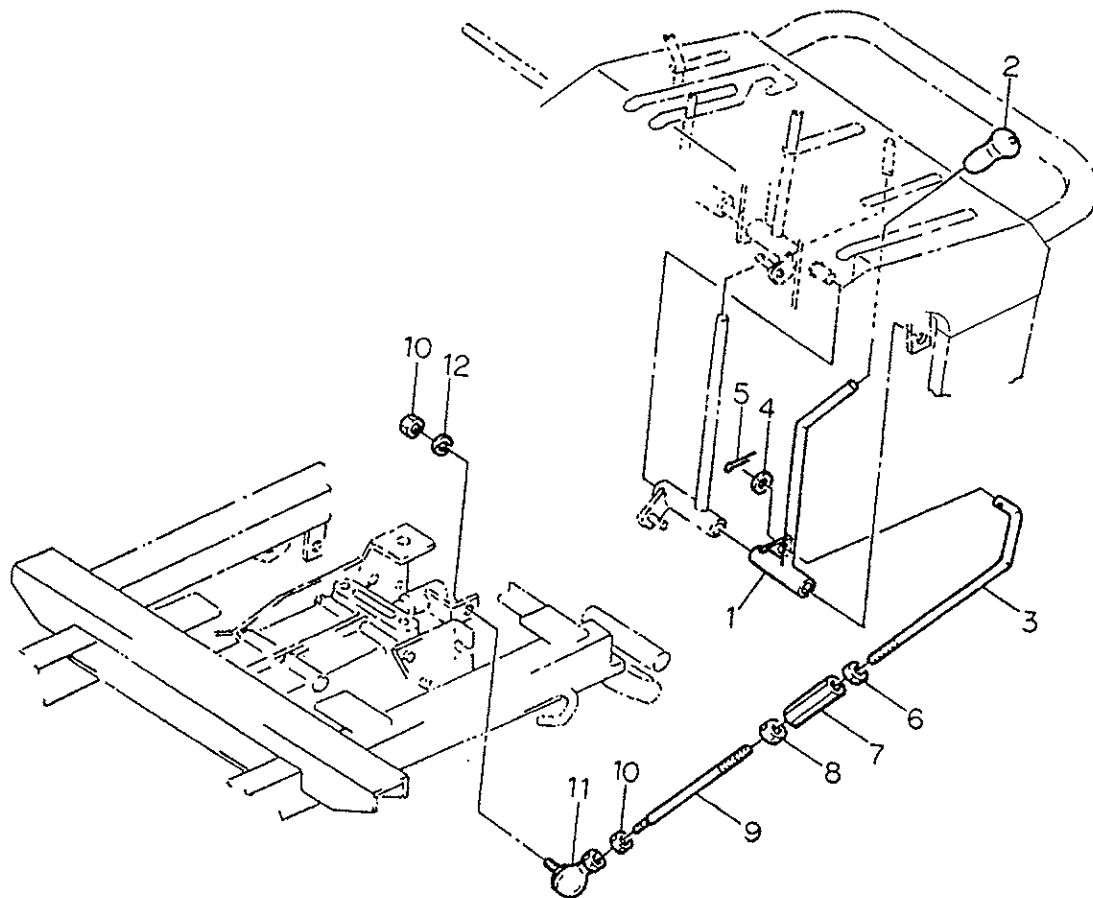
No.	Part No.	Part Description	Q'ty
1	0353-621-200-0B	Handle (500)	1
2	V211-361-002-5	Bolt (SP) M10 x 25	2
3	V201-261-213-0	Bolt M12 x 130	1
4	V411-260-012-0	Washer 12	4
5	V304-260-012-0	Nut M12	4
6	V201-261-209-0	Bolt M12 x 90	1
7	0354-621-230-1A	Lever guide	1
8	1115-441-011-0	Screw M6 x 16	2
9	V361-260-006-0	Nut with washer M6	2
10	0314-622-012-1A	Stopper rubber	2

LEVER/COVER (No. 2)



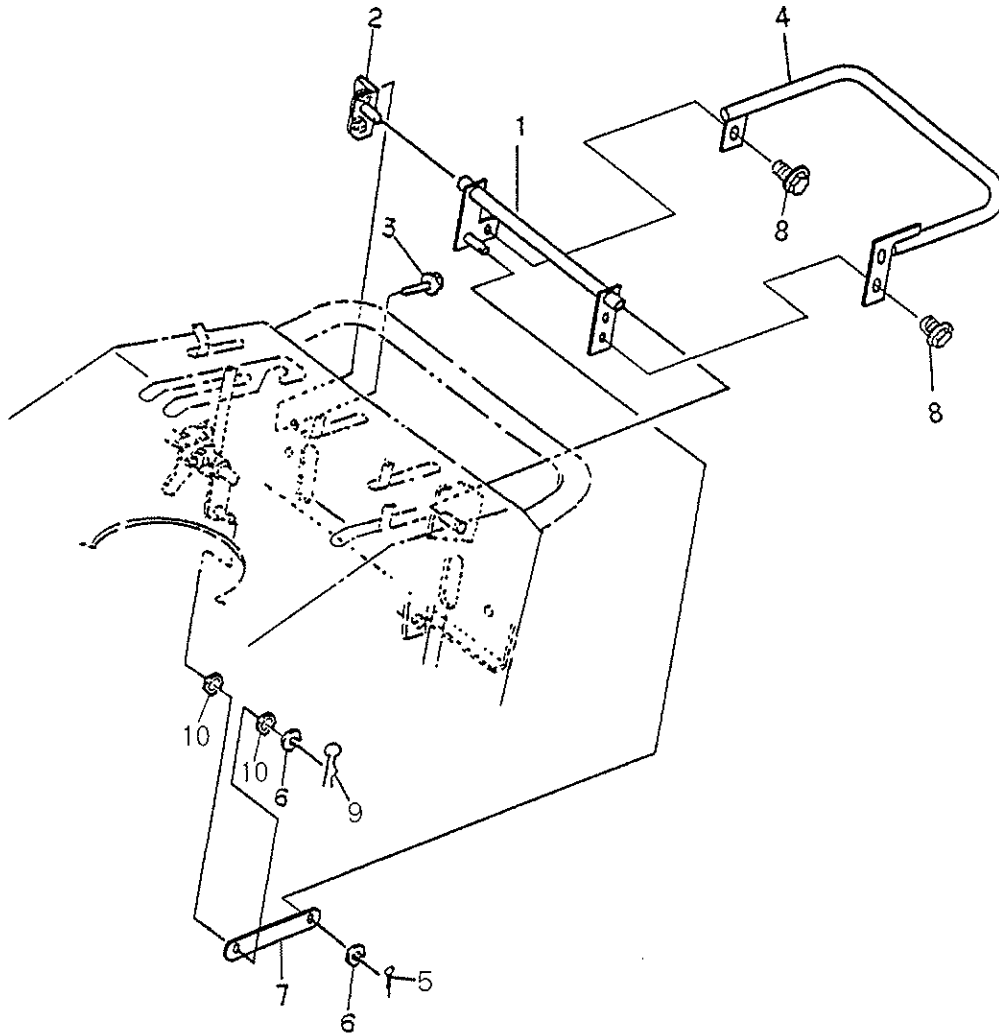
No.	Part No.	Part Description	Q'ty
1	0353-623-200-1A	Side clutch (L)	1
2	0353-623-210-1A	Side clutch (R)	1
3	0354-624-013-0	lever point bar	1
4	V411-260-012-0	Washer 12	2
5	1305-241-001-0A	Hair pin	2
6	0366-252-012-1A	Grip	2
7	0354-624-230-0	Clutch arm (L)	1
8	0354-624-240-1A	Clutch arm (R)	1
9	0354-624-250-2B	Tension lever point	1
10	0354-624-016-1A	Clutch lever	1
11	2101-230-001-0A	Grip	1
12	V411-260-010-0	Washer 10	3
13	V500-162-502-0	Split pin 2.5 x 20	1
14	0353-623-011-0	Clutch rod	2
15	0342-623-012-0	Clutch rod plate	2
16	V304-260-010-0	Nut M10	4
17	8935-009-013-0	hair pin (for wire hook)	2
18	1337-401-006-0C	Main clutch spring	2
19	0353-623-220-1A	Brake lever	1
20	1111-410-013-0	Grip (red)	1

LEVER/COVER (No. 3)



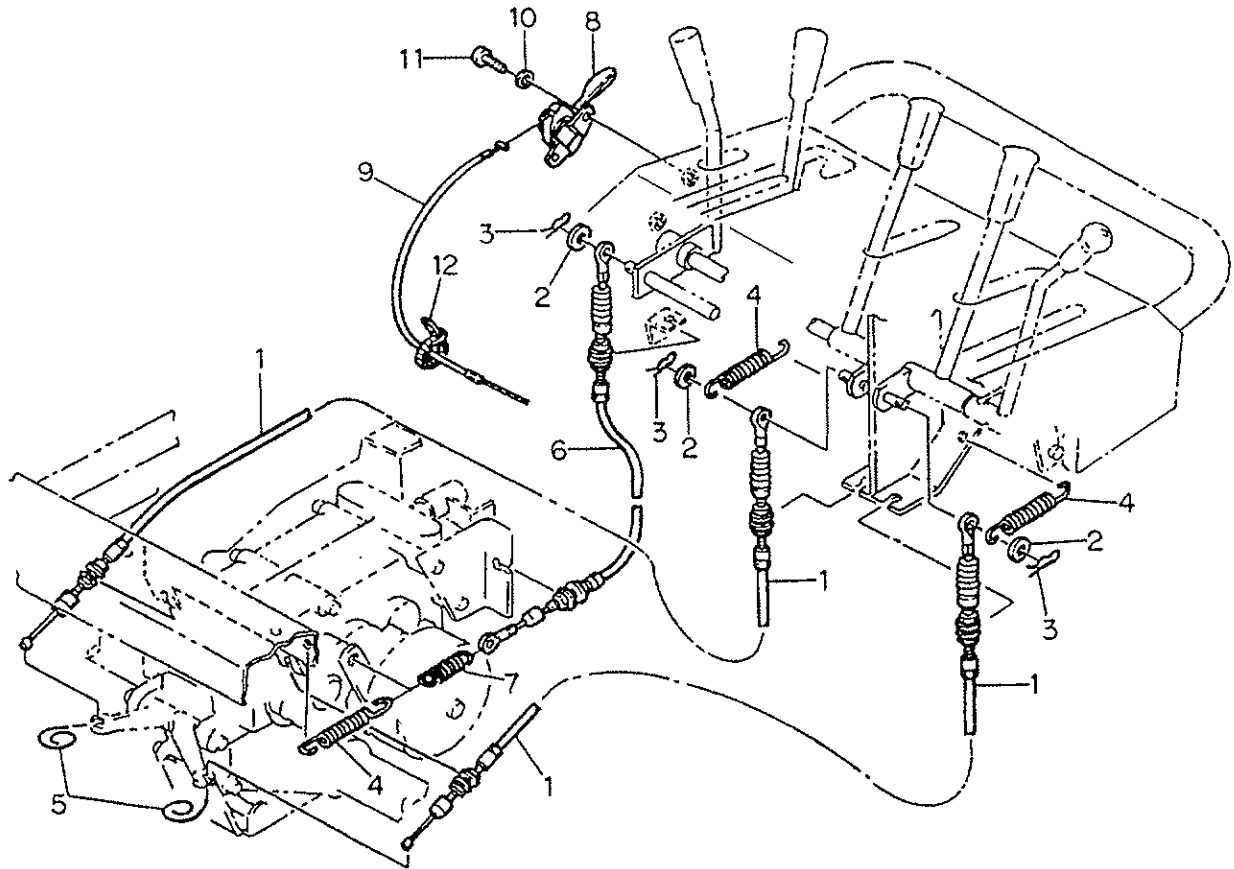
No.	Part No.	Part Description	Q'ty
1	0353-623-230-1A	Change lever	1
2	3517-105-004-0	Lever grip	1
3	0353-623-012-0	Change rod upper	1
4	V411-260-010-0	Washer 10	1
5	V500-162-502-0	Split pin 2.5 x 20	1
6	V300-260-010-0	Nut M10	1
7	0351-623-014-0	Adjust nut	1
8	0375-622-014-0	Nut (left) M10	1
9	0353-623-013-0	Change rod lower	1
10	V304-260-008-0	Nut M8	2
11	0761-310-017-0	Rod end bearing (R)	1
12	V401-160-008-0	Spring washer 8	1

LEVER/COVER (No. 4)



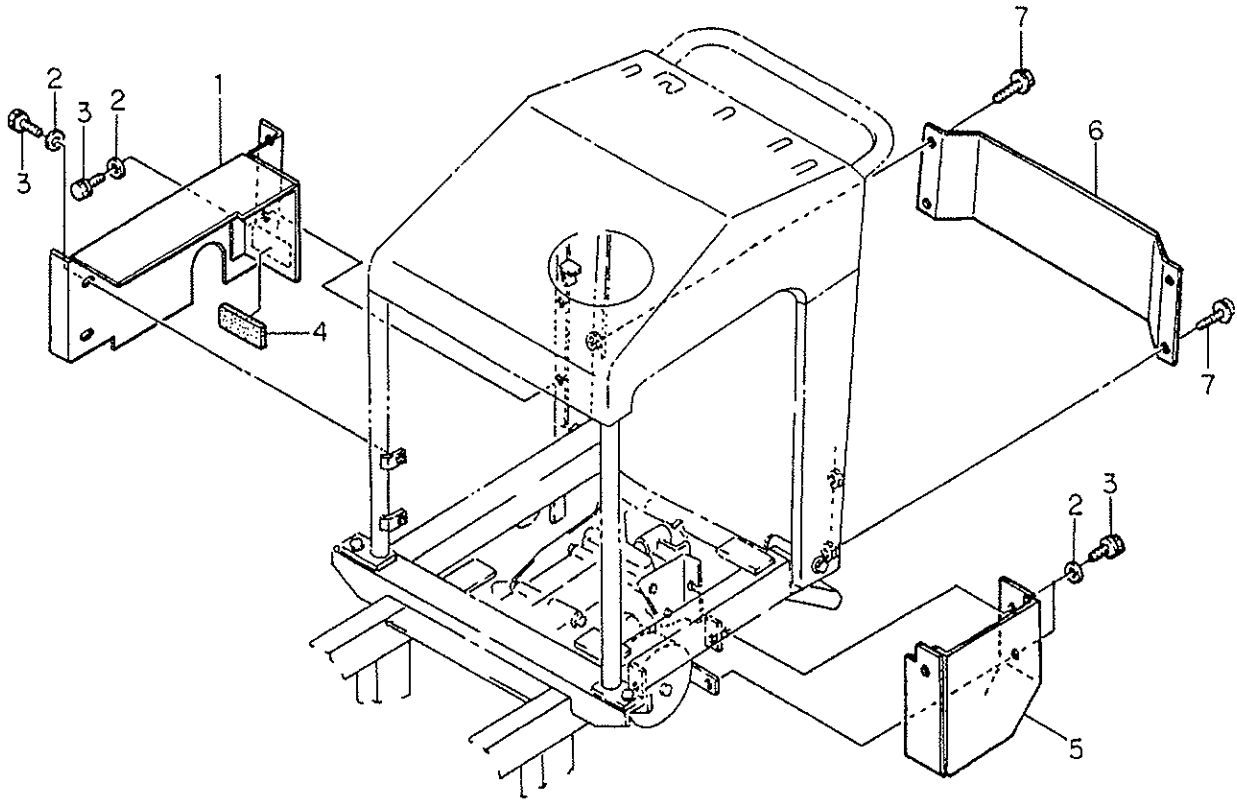
No.	Part No.	Part Description	Q'ty
1	0353-629-210-0A	Dead-man point bar	1
2	0354-623-250-0	Point holder	1
3	V211-360-802-0	Bolt (SP) M8 x 20	2
4	0353-629-220-0	Dead-man handle	1
5	V500-162-502-0	Split pin 2.5 x 20	1
6	V411-260-010-0	Washer 10	2
7	0353-629-012-0	Plate (19 x 109)	1
8	V211-360-801-6	Bolt (SP) M8 x 16	3
9	8935-009-013-0	Hair pin	1
10	V720-101-901-0	O-ring P10	2

LEVER/COVER (No.5)



No.	Part No.	Part Description	Q'ty
1	0343-625-011-1B	Cable (Side clutch)	2
2	V411-260-008-0	Washer 8	3
3	8935-009-013-0	Hair pin	3
4	0343-625-012-0	Spring (HE085)	3
5	3536-111-008-0	Wire	2
6	0343-626-011-2C	Cable (Brake)	1
7	0661-640-015-1A	Spring (HE045)	1
8	3100-320-200-0A	Throttle lever	1
9	0432-162-200-1A	Cable (Throttle)	1
10	V411-260-006-0	Washer 6	2
11	V120-266-001-6	Screw (S) M6 x 16	2
12	3536-142-006-1	Wire fixing metal	1

LEVER/COVER (No.6)



No.	Part No.	Part Description	Q'ty
1	0353-631-250-0	Belt cover (500D)	1
2	3789-151-006-0	Washer	7
3	V210-260-601-2	Bolt (S) M6 x 12	7
4	0353-630-011-0	Rubber spacer #60	1
5	0353-632-250-0	Brake cover (500)	1
6	0354-630-011-1A	Foot cover	1
7	V211-360-802-0	Bolt (SP) M8 x 20	4